

Minnesota

Fillmore

Report ID: FSA-156EZ

U.S. Department of Agriculture

Farm Service Agency

Abbreviated 156 Farm Record

DISCLAIMER: This is data extracted from the web farm database. Because of potential messaging failures in MIDAS, this data is not guaranteed to be an accurate and complete representation of data contained in the MIDAS system, which is the system of record for Farm Records.

Operator Name	Farm Identifier	Recon Number
TRACY J CLEMENT	DIV/6914	

Farms Associated with Operator:
2390, 5402, 5826, 6415, 7303, 8158, 8159, 9053, 9272, 9395

CRP Contract Number(s): None

Farmland	Cropland	DCP Cropland	WBP	WRP/EWP	CRP Cropland	GRP	Farm Status	Number of Tracts
155.06	93.25	93.25	0.0	0.0	0.0	0.0	Active	1
State Conservation	Other Conservation	Effective DCP Cropland	Double Cropped	MPL/FWP	Native Sod			
0.0	0.0	93.25	0.0	0.0	0.0			

ARC/PLC

ARC-IC NONE	ARC-CO CORN	PLC NONE	PLC-Default NONE
Crop	Base Acreage	CTAP Tran Yield	PLC Yield
CORN	64.5		151
Total Base Acres:	64.5	CCC-505 CRP Reduction	0.0

Tract Number: 1806 Description: SE4/SEC16/BLOOMFIELD

BIA Range Unit Number:

HEL Status: HEL: conservation system is being actively applied

Wetland Status: Tract does not contain a wetland

WL Violations: None

Farmland	Cropland	DCP Cropland	WBP	WRP/EWP	CRP Cropland	GRP
155.06	93.25	93.25	0.0	0.0	0.0	0.0
State Conservation	Other Conservation	Effective DCP Cropland	Double Cropped	MPL/FWP	Native Sod	
0.0	0.0	93.25	0.0	0.0	0.0	

Crop	Base Acreage	CTAP Tran Yield	PLC Yield	CCC-505 CRP Reduction
CORN	64.5		151	0.0
Total Base Acres:	64.5			

Owners: TRACY J CLEMENT

Other Producers: None

* KNOWN on the Auction as tracts 1 + 2

KNOWN ON the Auction AS

Farm 7218

Tracts # 1+2

100%

Tracy

Tract 1806



2016 Program Year

Map Created April 30, 2016



Unless otherwise noted: crops are non-irrigated
Corn = yellow for grain

Soybeans = common soybeans for grain
Wheat = HRS for grain or HRW for grain
Oats and Barley = Spring for grain

Rye = for grain
Peas = process
Alfalfa, Mixed Forage AGM, GMA, IGS = for forage
Beans = Dry Edible
NAG = for GZ

Canola = Spring for seed
Sunflower = oil or non-oil for grain

Roads

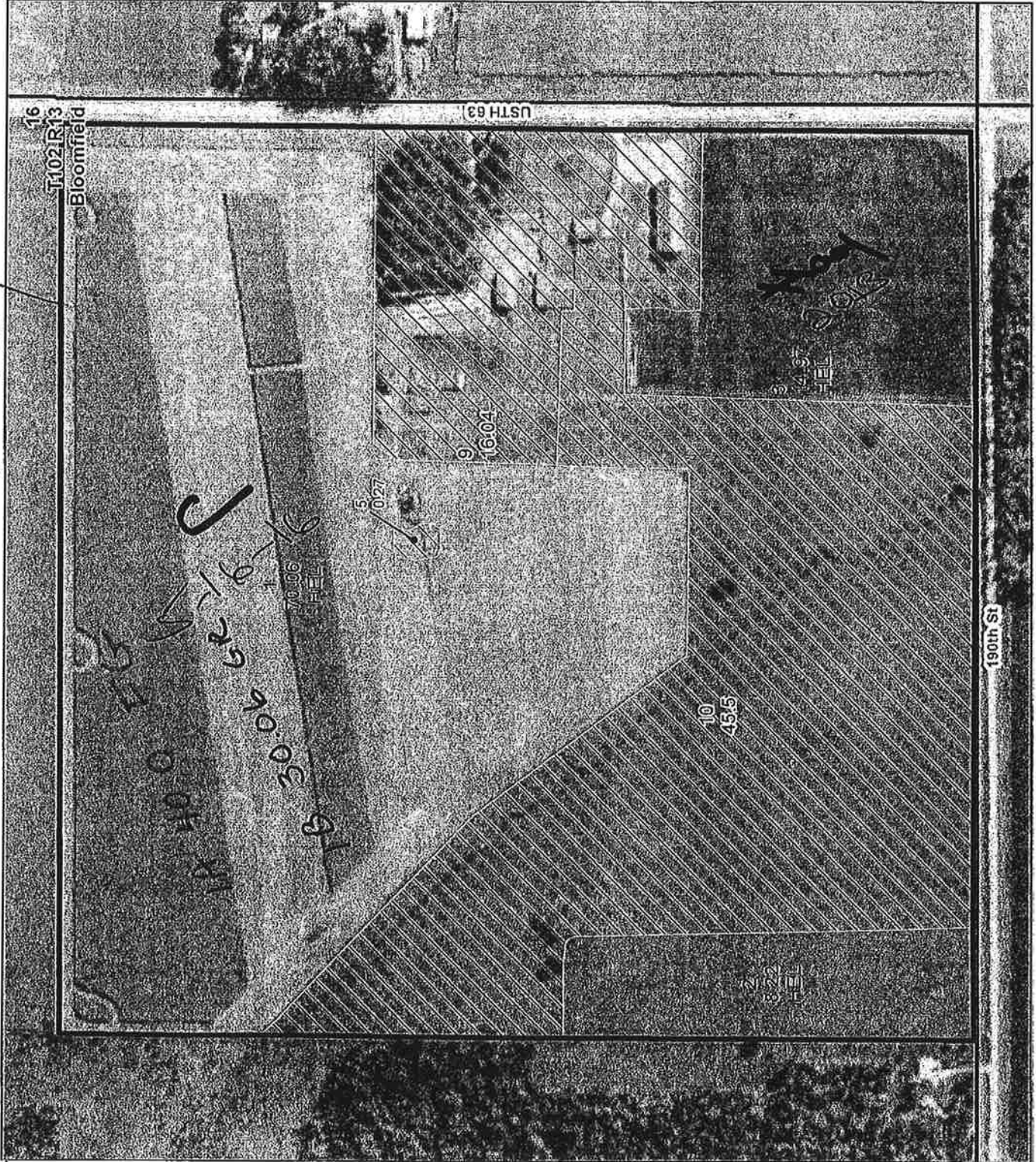
Common Land Unit

- Non-Cropland
- Cropland
- Tract Boundary
- PLSS

Wetland Determination Identifiers

- Restricted Use
- ▽ Limited Restrictions
- Exempt from Conservation
- Compliance Provisions

Tract Cropland Total: 93.25 acres



USDA FSA maps are for FSA Program administration only. This map does not represent a legal survey or reflect actual ownership; rather it depicts the information provided directly from the producer and/or the 2015 NAIP imagery. The producer accepts the data 'as is' and assumes all risks associated with its use. The USDA Farm Service Agency assumes no responsibility for actual or consequential damage incurred as a result of any user's reliance on this data outside FSA Programs. Wetland identifiers do not represent the size, shape, or specific determination of the area. Refer to your original determination (CPA-026 and attached maps) for exact boundaries and determinations or contact NRC-S.